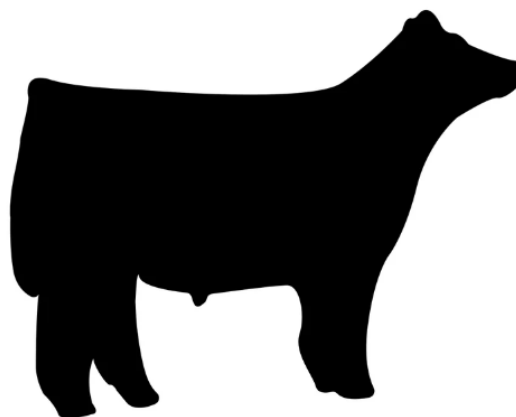
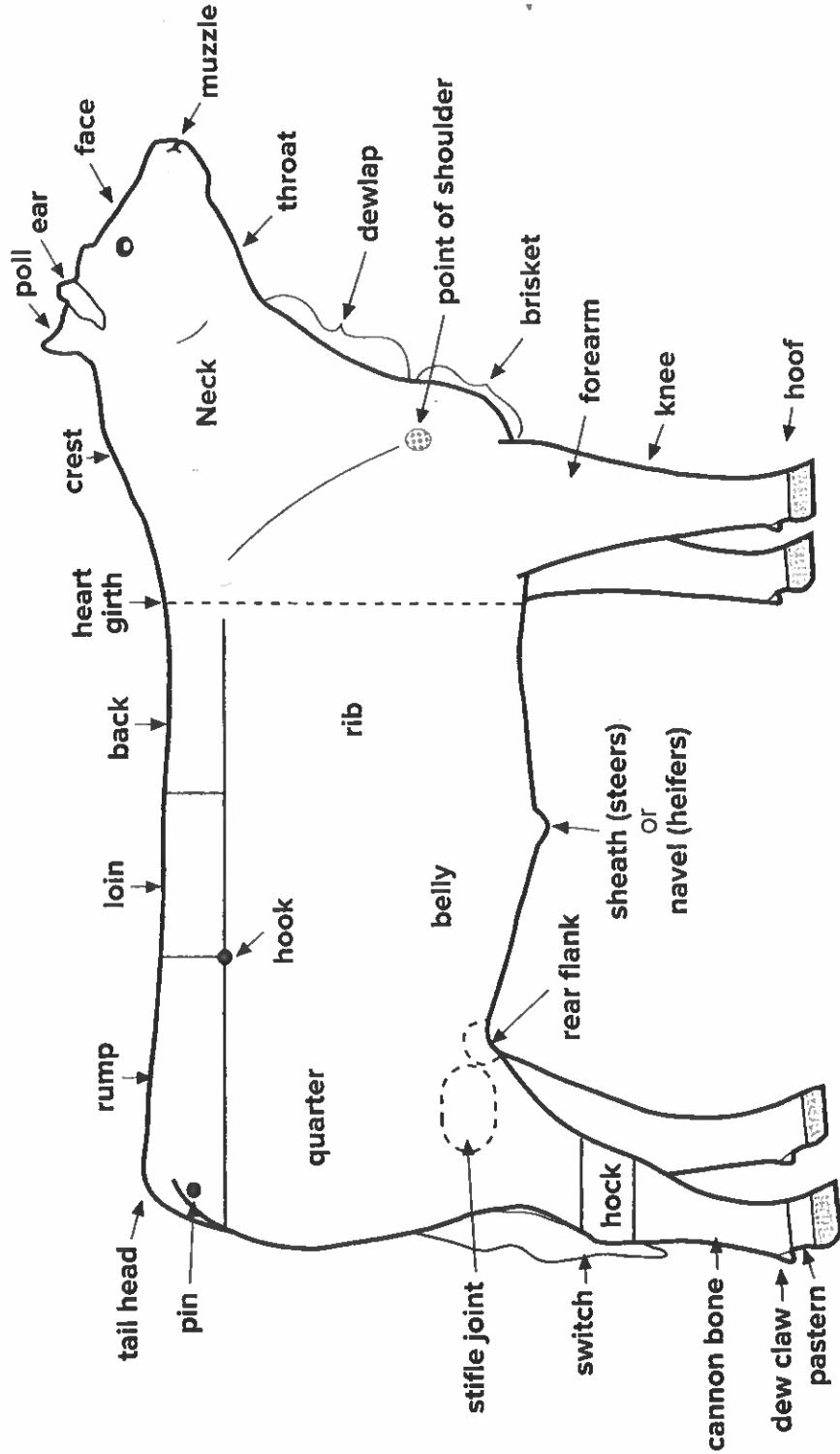


# 2024 Beef Project Skillathon Materials



Use this POSTER with the Match Each Body Part to Its Correction Location situation/task card and poster ID tags.

# Parts of a Beef Animal



OHIO STATE UNIVERSITY EXTENSION

0003\_BEF\_ILU\_PFE\_JANT

Quality Assurance and Animal Care: Youth Education Program  
 This material is based upon work supported by Extension Grant #  
 93350-0096. Graphic work with the support of Extension #1709, Ohio  
 State University Extension. Produced and distributed by 4-H Youth Development

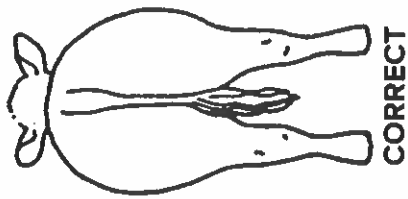


THE OHIO STATE UNIVERSITY  
 COLLEGE OF FOOD, AGRICULTURAL  
 AND ENVIRONMENTAL SCIENCES

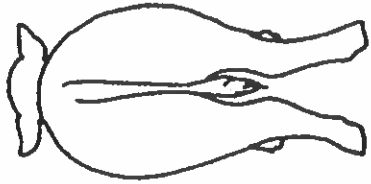
Use this POSTER with the Match Each Structure Name with the Correct Diagram situation/task card and the beef feet and leg structure ID tags.

OHIO STATE UNIVERSITY EXTENSION

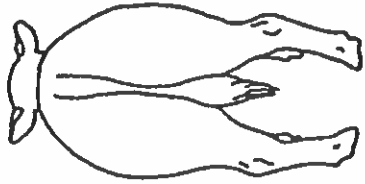
# Beef Feet and Leg Structure



CORRECT



cow-hocked or  
splayfooted



bowlegged or  
pigeon-toed



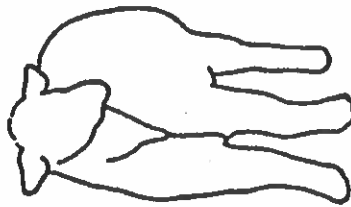
sickle-hocked



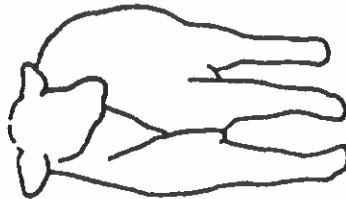
CORRECT



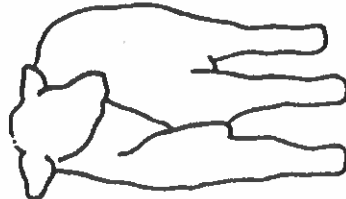
post-legged



knock-kneed  
or  
splayfooted



bowlegged or  
pigeon-toed



CORRECT



buck-kneed




CORRECT



calf-kneed

 THE OHIO STATE UNIVERSITY  
COLLEGE OF FOOD, AGRICULTURAL  
AND ENVIRONMENTAL SCIENCES

 BEEF  
LEARNING LABORATORY INT

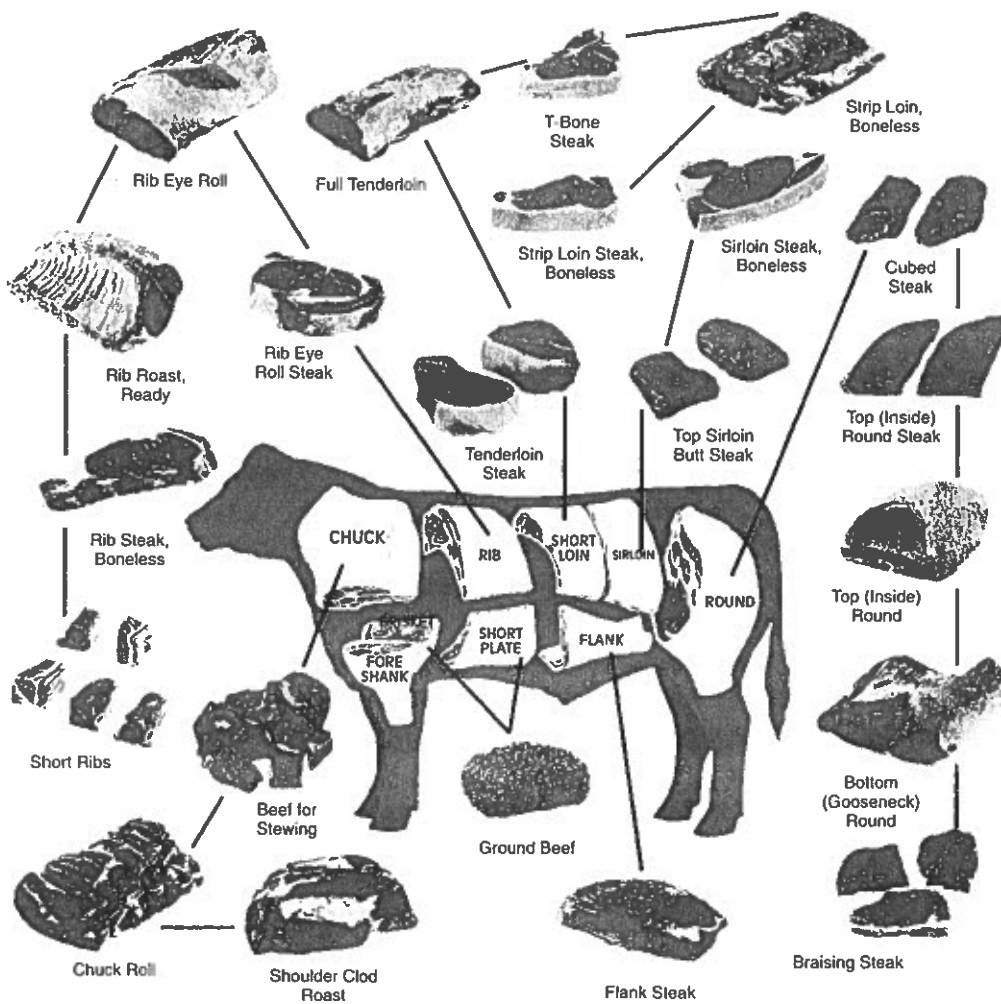
 Quality Assurance and Animal Care: Youth Education Program  
This poster is licensed under a Creative Commons Attribution-NonCommercial-ShareAlike 4.0 International License.  
9125FD-0706. Content used with the express permission of The Ohio  
University Extension. Posters are distributed by 4-H Youth Development.

0004\_BEEF\_LIAK\_PST\_CWP

Use this CHART with the Identify Each Cut of Meat situation/task cards (2), the Retail Meat Cut prints, and the wholesale cuts of beef ID tags.

OHIO STATE UNIVERSITY EXTENSION

# Wholesale Cuts of Beef



Beef Quality Improvement Program  
 THE OHIO STATE UNIVERSITY  
 1000 N. HOVINGDON BLVD.  
 COLUMBUS, OH 43210-1234

0009\_BEF\_LLX\_CHR\_WCB

Use this POSTER with the Match Each Label/Insert Part to Its Correct Location situation/task card and poster ID tags.

OHIO STATE UNIVERSITY EXTENSION

# Medication Label

**Omnibiotic** \_\_\_\_\_ drug name  
(hydrocillin) \_\_\_\_\_ active ingredient(s)

**Directions for use:** See *package insert*

**Warning:** The use of this drug must be \_\_\_\_\_ **withholding times**

discontinued for 30 days before treated animals are slaughtered for food. Exceeding the highest recommended dosage level may result in antibiotic residues in meat or milk beyond the withdrawal time.

cautions and warnings

**Store between 2° and 8° C (36° and 46° F).** \_\_\_\_\_ **storage guidelines**  
**Keep dry and keep away from light.**

Net Contents: 100 ml \_\_\_\_\_ **quantity**

Distributed by **USA Animal Health, Inc.** \_\_\_\_\_ **distributor name**



**O** THE OHIO STATE UNIVERSITY  
COLLEGE OF FOOD, AGRICULTURAL  
AND ENVIRONMENTAL SCIENCES



0001\_REF\_LLL\_PST\_QAM  
Quality Assurance and Animal Care, Youth Education Program  
The material is based upon work supported by the National Institute of Food and Agriculture, United States Department of Agriculture. All rights reserved. No part of this publication may be reproduced without permission from the publisher. © 2011-2012. Prepared and distributed by 4-H Youth Development



Use this POSTER with the  
Match Each Label/Insert Part to Its Correct Location situation/task card and poster ID tags.

OHIO STATE UNIVERSITY EXTENSION

# Medication Insert

## OMNIBIOTIC \_\_\_\_\_

(Hydrocillin in Aqueous Suspension) \_\_\_\_\_

For use in Beef Cattle, Lactating and  
Non-Lactating Dairy Cattle, Swine and Sheep \_\_\_\_\_

*Read Entire Brochure Carefully Before Using This Product*

### FOR INTRAMUSCULAR USE ONLY

#### Active ingredients

Omnibiotic is an effective antimicrobial preparation containing hydrocillin hydrochloride. Each ml of this suspension contains 200,000 units of hydrocillin hydrochloride in an aqueous base.

#### Indications \_\_\_\_\_

CATTLE - bronchitis, foot rot, leptospirosis, mastitis, metritis, pneumonia, wound infections

SWINE - erysipelas, pneumonia

SHEEP - foot rot, pneumonia, mastitis; and other infections in these species caused by or associated with hydrocillin-susceptible organisms

#### Recommended daily dosage \_\_\_\_\_

The usual dose is 2 ml per 100 lb of body weight given once daily. Maximum dose is 15 ml/day. *Continue treatment for 1 to 2 days after symptoms disappear.*

Body Weight	Dosage
100 lb	2 ml
300 lb	6 ml
500 lb	10 ml
750 lb or more	15 ml

#### Cautions \_\_\_\_\_

- Inject omnibiotic deep within the fleshy muscle of the neck or thigh. \_\_\_\_\_  
Do not inject this material in the hip or rump, subcutaneously, into a blood vessel, or near a major nerve because it may cause tissue damage.
- If improvement does not occur within 48 hours, reconsider the diagnosis and initiate appropriate treatment.
- Closely observe treated animals for at least 30 minutes. If a reaction occurs, discontinue treatment and immediately administer epinephrine and antihistamines.
- Store omnibiotic between 2° and 8° C (36° to 46° F). Warm to room temperature \_\_\_\_\_ and shake well before using. Keep refrigerated when not in use.

#### Warning \_\_\_\_\_

Milk that has been taken from animals during treatment and for 48 hours (4 milkings) after the last treatment must not be used for food. Discontinue the use of this drug for 30 days before treated animals are slaughtered for food.

#### How supplied \_\_\_\_\_

Omnibiotic is available in vials of 100 ml.



drug name  
active  
ingredient(s)

species and  
animal class

approved uses

dosage

cautions  
route of  
administration

storage  
requirements

warnings  
withholding times

available sizes