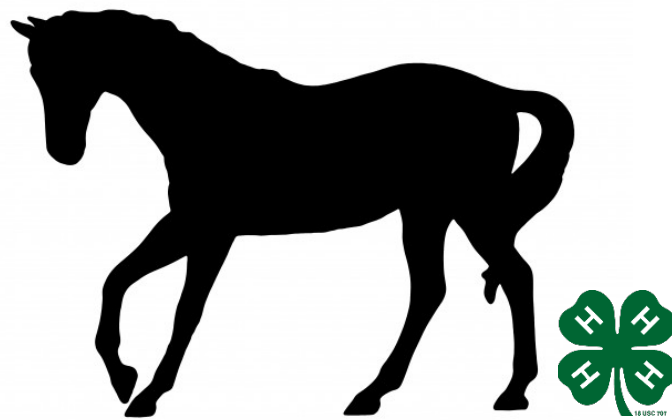


2023



4-Station Judging Study Guide

Breakdown of Stations

- I. Feed, Health, Breeds & Bits (20 points)
- II. Project Books & Rules (County & State; 35 points)
- III. Parts of the Horse & Hoof (20 points)
- IV. Tack/Equipment, Handling/Inspection and Grooming (25 points)

*All members are required to complete feed and health questions. Health questions are tailored for different divisions. The medication/digestive portion is division specific. Beginners and intermediates are required to know the medication label and advanced members are required to know the digestive tract parts- all of these items are included in the study guide.

4-Station Judging Dates:

Stations I & II: Tuesday, June 6, 2023 from 6:00-8:00 pm at the Trumbull County Fairgrounds. ***5:30 start time for members who participate with multiple species**

Stations III & IV: Sunday, July 9th 6:00-8:00 pm -OR- Monday, July 10 from 2:00-4:00 pm at the Trumbull County Fairgrounds. Stations III & IV will be completed with your horse during the Trumbull County Fair.

Divisions are not divided by age but rather number of years in a horse project.

Beginner	Years 1 & 2
Intermediate	Years 3-5
Advanced	Years 6+

4-Station Judging is REQUIRED in order to exhibit your project at the fair and receive 4-H credit for the year.

Parts of a Western Saddle Word Bank

- o Horn
- o Pommel
- o Seat
- o Cantle
- o Skirt
- o Fender
- o Rear Cinch Billet
- o Back Girth
- o Back Cinch Connector
- o Stirrup
- o Girth
- o Front Cinch Strap
- o Dee Ring
- o Seat Jockey
- o Length of Seat

Parts of an English Saddle Word Bank

- o Cantle
- o Seat
- o Pommel
- o Length of Seat
- o Stirrup Bar
- o Stirrup Iron
- o Knee Roll
- o Stirrup Tread
- o Stirrup Leather
- o Flap
- o Skirt
- o Panel
- o Buckle Guard
- o Billets
- o Girth Buckle
- o Girth
- o Sweat Flap

Other Tack Terms

- o Tie Down
- o Saddle Pad
- o Bell Boots
- o Leg Wraps
- o Breast Collar
- o Martingale
- o Splint/Combination Boot
- o Basal

Parts of a Western Bridle Word Bank

- o Browband/Ear piece
- o Headstall
- o Cheek Piece
- o Curb/Snaffle Bit
- o Curb Chain/strap
- o Throat Latch
- o Rein

Parts of an English Bridle Word Bank

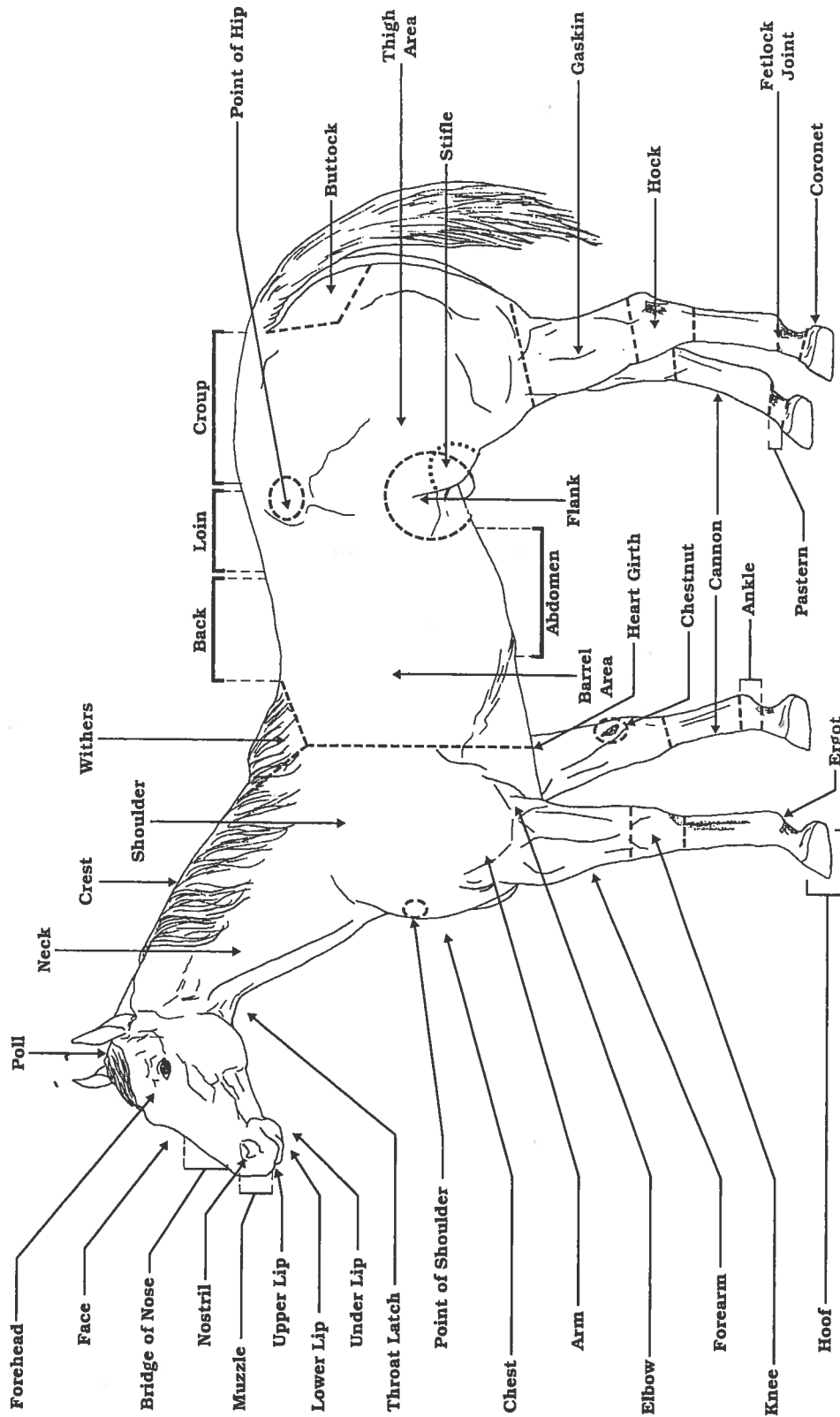
- o Browband/Crown Piece
- o Headstall
- o Cavesson/Noseband
- o Curb/Snaffle Bit
- o Throat Latch
- o Rein

Parts of the Harness Word Bank

- o Blinds
- o Check Rein
- o Bit
- o Breast Strap
- o Shaft Loop
- o Back Pad
- o Lines
- o Crupper
- o Tug or Trace
- o Breeching (if collar buggy)
- o Nose band

Use this poster in conjunction with Anatomy - Match the correct part names with their locations on the diagram situation/task statement and/or Parts of a Horse identification tags.

Parts of a Horse



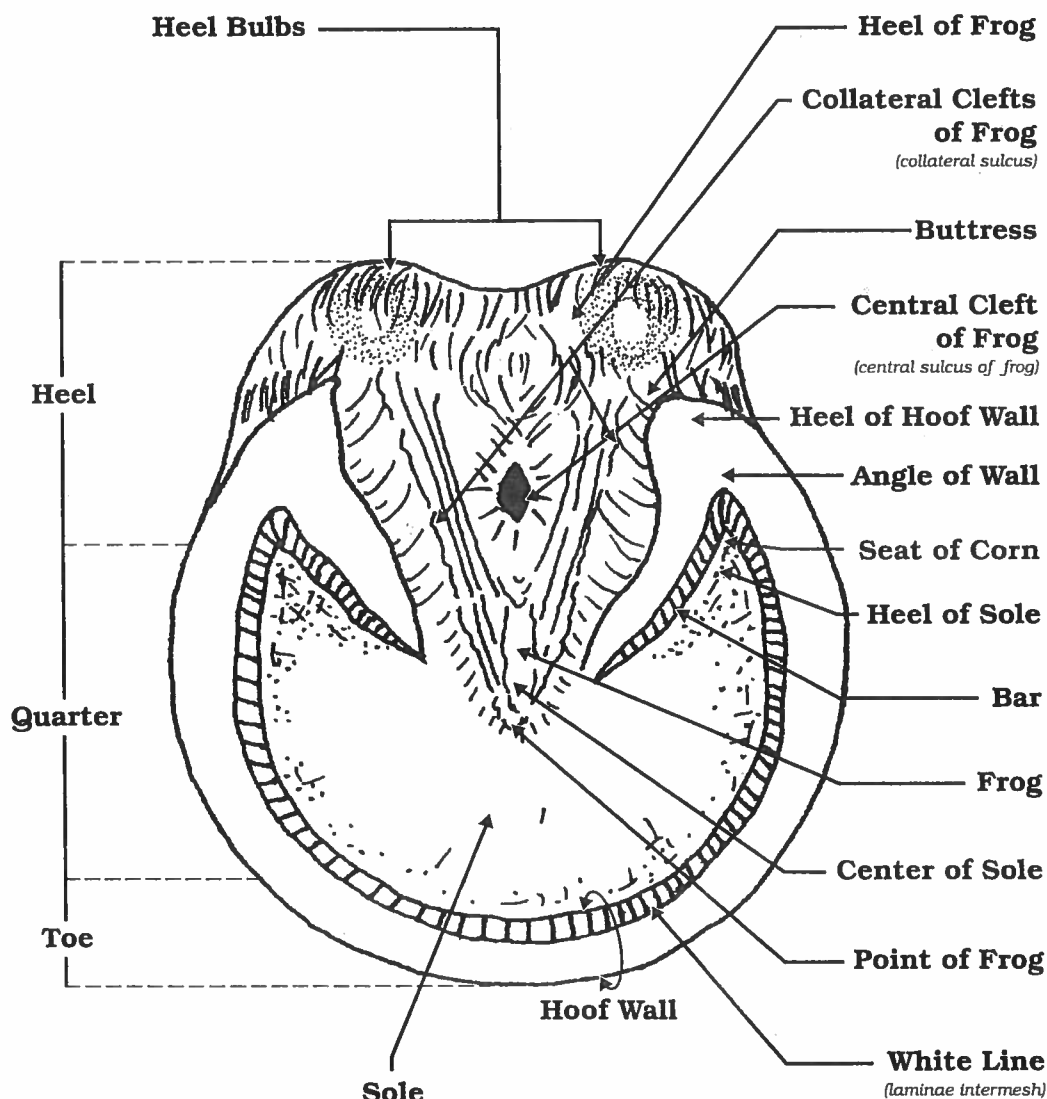
HORSE
LEARNING LABORATORY KIT

Exploratory Learning: Educational Program

Product distribution through Curriculum Materials Service

Use this chart in conjunction with Anatomy - Label the parts of the horse's hoof situation/task statement and/or Parts of the Hoof identification tags.

Parts of the Hoof





gag bit

gag bit with jointed copper
mouthpiece, wonder bit, contest
wonder bit, or wonder gag bit



snaffle bit

medium-weight loose ring
snaffle bit or O-ring snaffle bit



snaffle bit

D-ring bit or dee bit



snaffle bit

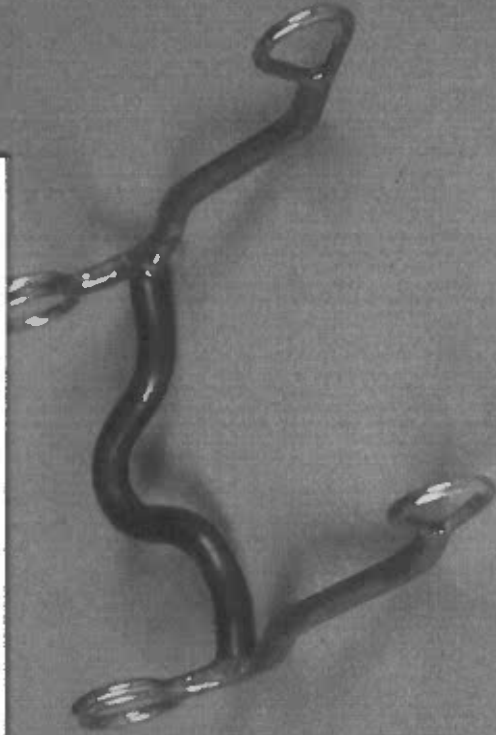
hollow mouth
eggbutt snaffle bit





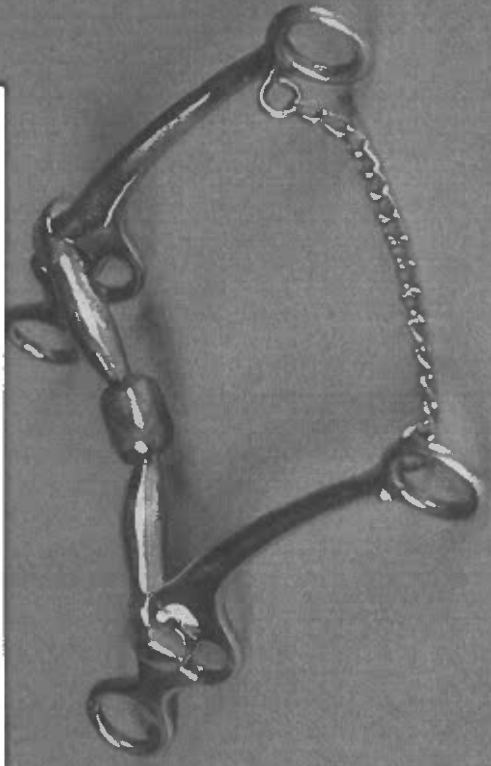
curb bit

curb grazing bit with high port and sweet iron mouthpiece



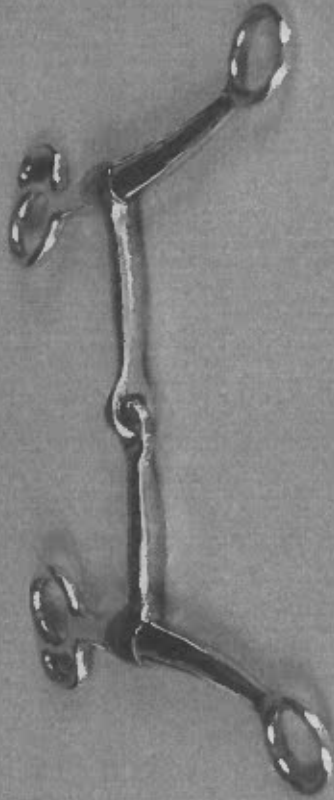
Billy Allen Bit®

Billy Allen low cheek bit with broken mouthpiece and copper roller or reining snaffle bit (not a true snaffle bit)



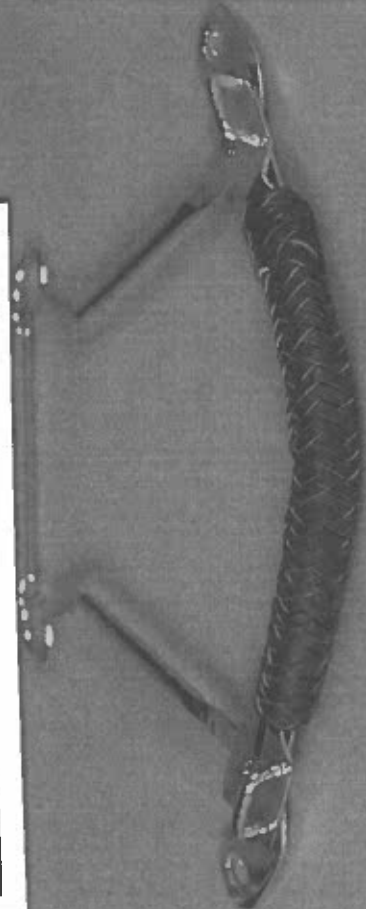
Tom Thumb bit

jointed Tom Thumb bit with copper mouthpiece, colt breaking bit, or a Tom Thumb snaffle bit (NOT a true snaffle bit)



mechanical hackamore

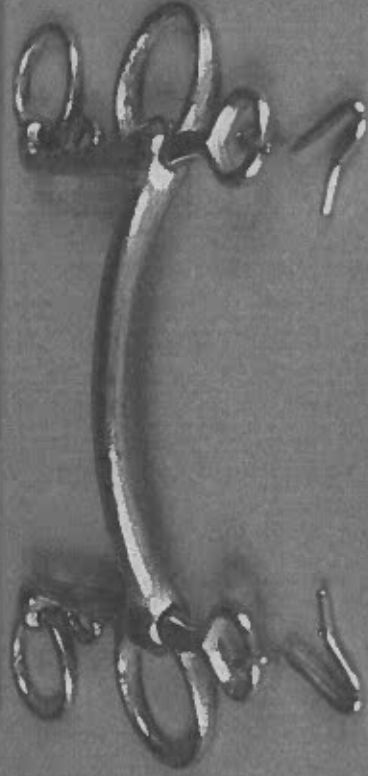
braided leather hackamore





pelham bit

mullen mouth pelham bit



snaffle bit

twisted, full-cheek
snaffle bit



pelham bit

jointed pelham bit
with curb chain



kimberwick bit

low port kimberwick bit
with curb chain





driving bit

half-cheek snaffle driving bit



driving bit

jointed Liverpool driving bit
with curb chain or
Liverpool coaching bit



EQUINE 4- STATION PROJECT JUDGING SCORING SHEET

Name _____ 4-H Age _____

Club _____ Division (circle): Beginner Intermediate Advanced
(Year 1 & 2) (3,4 & 5) (6 +)

Project Book Name _____ Project Book Number _____

Station 1 & 2 will be completed during Animal Project Judging at designated date*

STATION 1	POSSIBLE SCORE	ACTUAL SCORE	/20
-----------	----------------	--------------	-----

Feed (5 x 1 pt), Health (5 x 1 pt) and Breeds (5 x 1pt)	15 points	
Bits (5 x 1pt)	5 points	

STATION 2	POSSIBLE SCORE	ACTUAL SCORE	/35
-----------	----------------	--------------	-----

Project Book, Record Book & Questions *books must be signed & dated by advisor	10/5/5 points (20 points total)	
County Horse Rules	10 points	
State Horse Rules [Uniform Rules for 4-H Horse Shows]	5 points	

Station 3 & 4 will be completed Monday of Fair at designated times*

STATION 3	POSSIBLE SCORE	ACTUAL SCORE	/20
-----------	----------------	--------------	-----

Parts of Horse (5 x 2 pts each)	10 points	
Parts of Hoof (5 x 2 pts each)	10 points	

STATION 4	POSSIBLE SCORE	ACTUAL SCORE	/25
-----------	----------------	--------------	-----

Tack & Equipment Identification (5 x 2 pts each)	10	
Handling/Inspection Grooming/Cleanliness (Tack & Horse)	10 5	

Total Possible Score

Total Actual Score

100 points	
------------	--

MEMBER GRADE: _____ **Blue (Excellent)** _____ **Red (Good)** _____ **White (Fair)**
 100-85 points 84-60 points 59-below points

Please return score sheet to check-in table to receive grade ribbon.

Notes for 2023:

1. Divisions were changed from age based to years in equine project (2020). We now have beginner, intermediate and advanced.
2. Project and record books will be signed and dated by advisor each year to prevent duplication.
3. Breeds-
 - a. Beginner- member is allowed to pick five breeds that they know.
 - b. Intermediate/Advanced- judge will select five breeds and member will have to identify.
4. Bits:
 - a. Beginners- member will select five that they know
 - b. Intermediate/Advanced- judge will select five bits and member will have to identify. Advanced may be asked out legality of bit.
5. Health questions will be created by the 4-H educator.
6. Tack questions will be asked per discipline.
7. Grooming & Cleanliness: horses should be washed/brushed; clean and free from dirt, etc.
8. Parts of Horse/Hoof: will be completed on the member's project horse. If weather is inclement, poster will work.
9. Handling: Walk, trot, turn around and set up with inspection (showmanship).