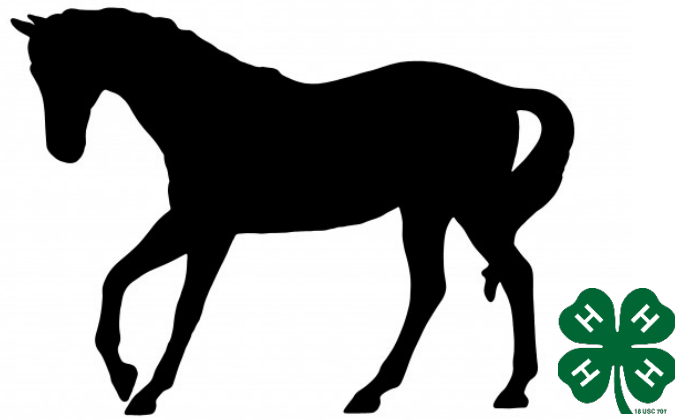


# 2022



## 4-Station Judging Study Guide

## Breakdown of Stations

- I. Feed, Health & Breeds & Medication/Digestive Tract (20 points)
- II. Project Books & Rules (County & State; 35 points)
- III. Parts of the Horse & Hoof (20 points)
- IV. Tack/Equipment, Handling/Inspection and Grooming (25 points)

\*All members are required to complete feed and health questions. Health questions are tailored for different divisions. The medication/digestive portion is division specific. Beginners and intermediates are required to know the medication label and advanced members are required to know the digestive tract parts- all of these items are included in the study guide.

### 4-Station Judging Dates:

**Stations I & II: Tuesday, June 7, 2022 from 6:00-8:00 pm** at the Trumbull County Fairgrounds. **\*5:30 start time for members who participate with multiple species**

**Stations III & IV: Monday, July 11 from 6:00-8:00 pm** at the Trumbull County Fairgrounds. Stations III & IV will be completed with your horse during the Trumbull County Fair.

Divisions are not divided by age but rather number of years in a horse project.

Beginner	Years 1 & 2
Intermediate	Years 3-5
Advanced	Years 6+

**4-Station Judging is REQUIRED in order to exhibit your project at the fair and receive 4-H credit for the year.**

#### Parts of a Western Saddle Word Bank

- o Horn
- o Pommel
- o Seat
- o Cantle
- o Skirt
- o Fender
- o Rear Cinch Billet
- o Back Girth
- o Back Cinch Connector
- o Stirrup
- o Girth
- o Front Cinch Strap
- o Dee Ring
- o Seat Jockey
- o Length of Seat

#### Parts of an English Saddle Word Bank

- o Cantle
- o Seat
- o Pommel
- o Length of Seat
- o Stirrup Bar
- o Stirrup Iron
- o Knee Roll
- o Stirrup Tread
- o Stirrup Leather
- o Flap
- o Skirt
- o Panel
- o Buckle Guard
- o Billets
- o Girth Buckle
- o Girth
- o Sweat Flap

#### Other Tack Terms

- o Tie Down
- o Saddle Pad
- o Bell Boots
- o Leg Wraps
- o Breast Collar
- o Martingale
- o Splint/Combination Boot
- o Basal

#### Parts of a Western Bridle Word Bank

- o Browband/Ear piece
- o Headstall
- o Cheek Piece
- o Curb/Snaffle Bit
- o Curb Chain/strap
- o Throat Latch
- o Rein

#### Parts of an English Bridle Word Bank

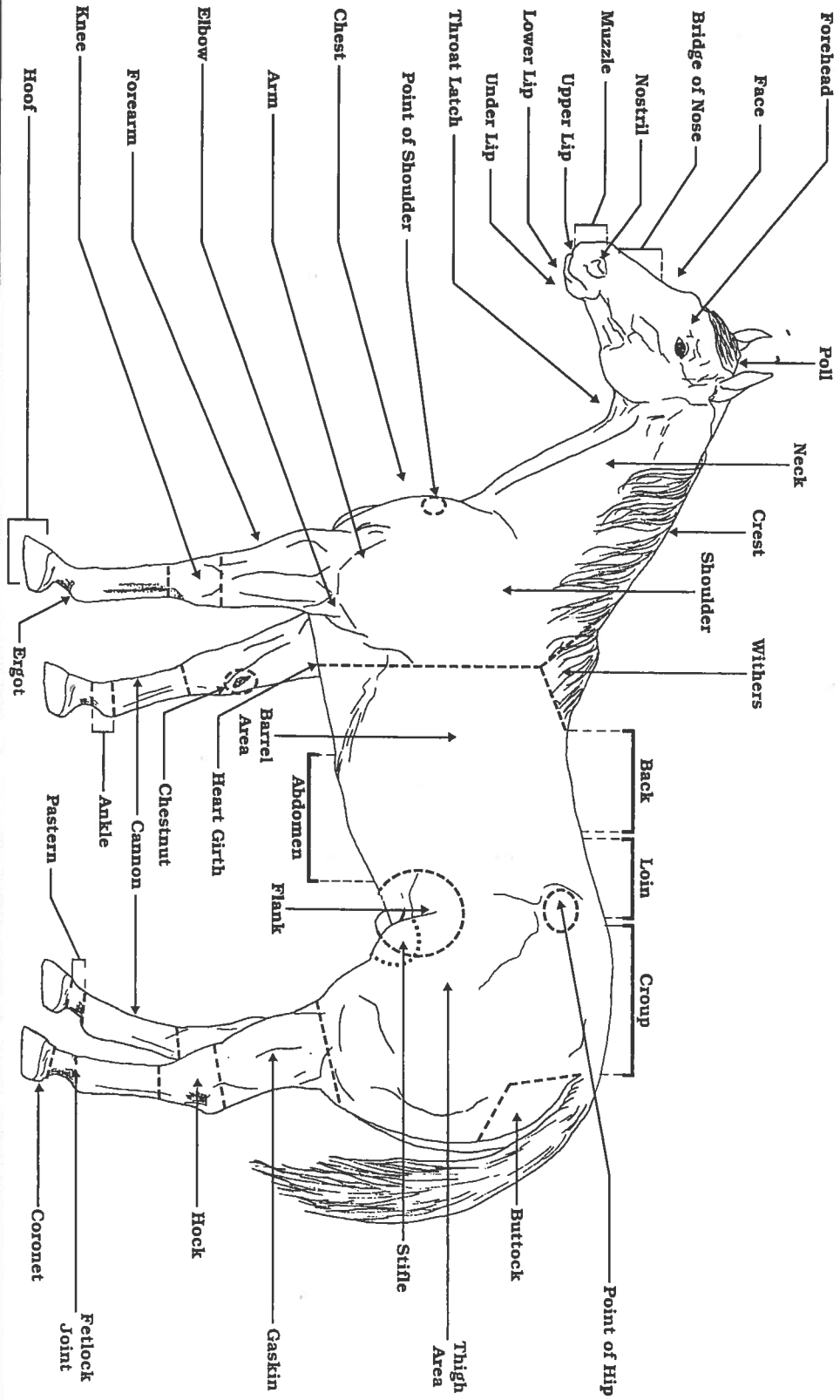
- o Browband/Crown Piece
- o Headstall
- o Cavesson/Noseband
- o Curb/Snaffle Bit
- o Throat Latch
- o Rein

#### Parts of the Harness Word Bank

- o Blinds
- o Check Rein
- o Bit
- o Breast Strap
- o Shaft Loop
- o Back Pad
- o Lines
- o Crupper
- o Tug or Trace
- o Breeching (if collar buggy)
- o Nose band

Use this poster in conjunction with Anatomy - Match the correct part names with their locations on the diagram situation/task statement and/or Parts of a Horse identification tags.

# Parts of a Horse



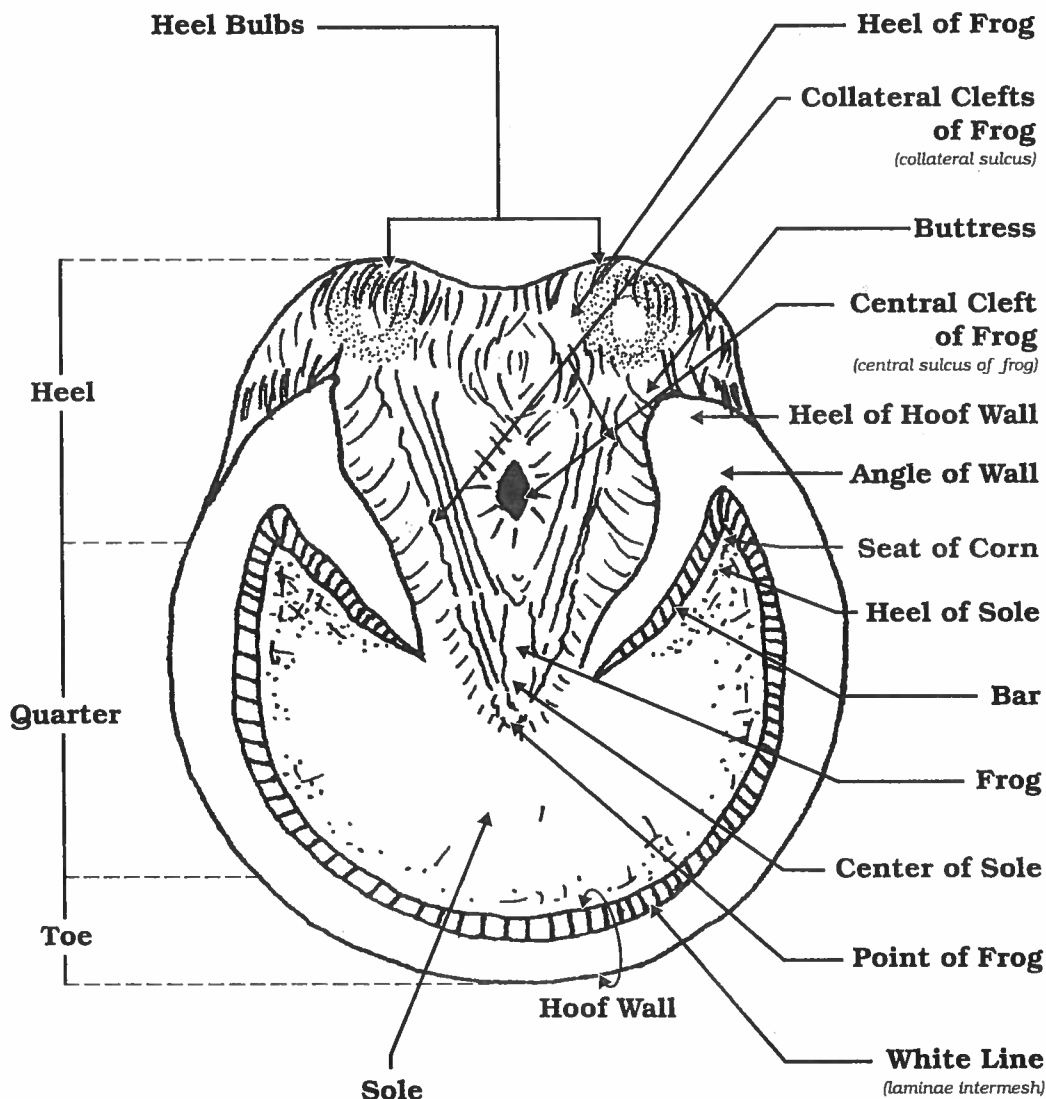
**HORSE**  
LEARNING LABORATORY KIT

Exploratory Learning: Educational Program

Product distribution through Curriculum Materials Service

Use this chart in conjunction with Anatomy - Label the parts of the horse's hoof *situation/task* statement and/or Parts of the Hoof identification tags.

# Parts of the Hoof



Exploratory Learning: Educational Program

Product distribution through Curriculum Materials Service

Use this poster in conjunction with Care - Read the following drug label and/or insert, and correctly match each part to its corresponding location situation/task statement and/or Medication Label/Insert Identification tags.

# Medication Label

Name of Drug \_\_\_\_\_

**Equibiotic**

(hydrocillin) \_\_\_\_\_

Active Ingredients \_\_\_\_\_

**Directions for use: See package insert**

Withholding Times \_\_\_\_\_

**Warning:** The use of this drug must be discontinued for 30 days before treated animals are slaughtered for food. Exceeding the highest recommended dosage level may result in antibiotic residues in meat or milk beyond the withdrawal time.

Cautions and Warnings \_\_\_\_\_



Storage \_\_\_\_\_

**Store between 2° and 8° C (36° and 46° F)**  
**Keep dry and keep away from light**

Quantity of Contents \_\_\_\_\_

Net contents: 100 ml

Distributed by

**USA Animal Health, Inc.**

Name of Distributor \_\_\_\_\_

TAKE TIME



OBSERVE LABEL DIRECTIONS



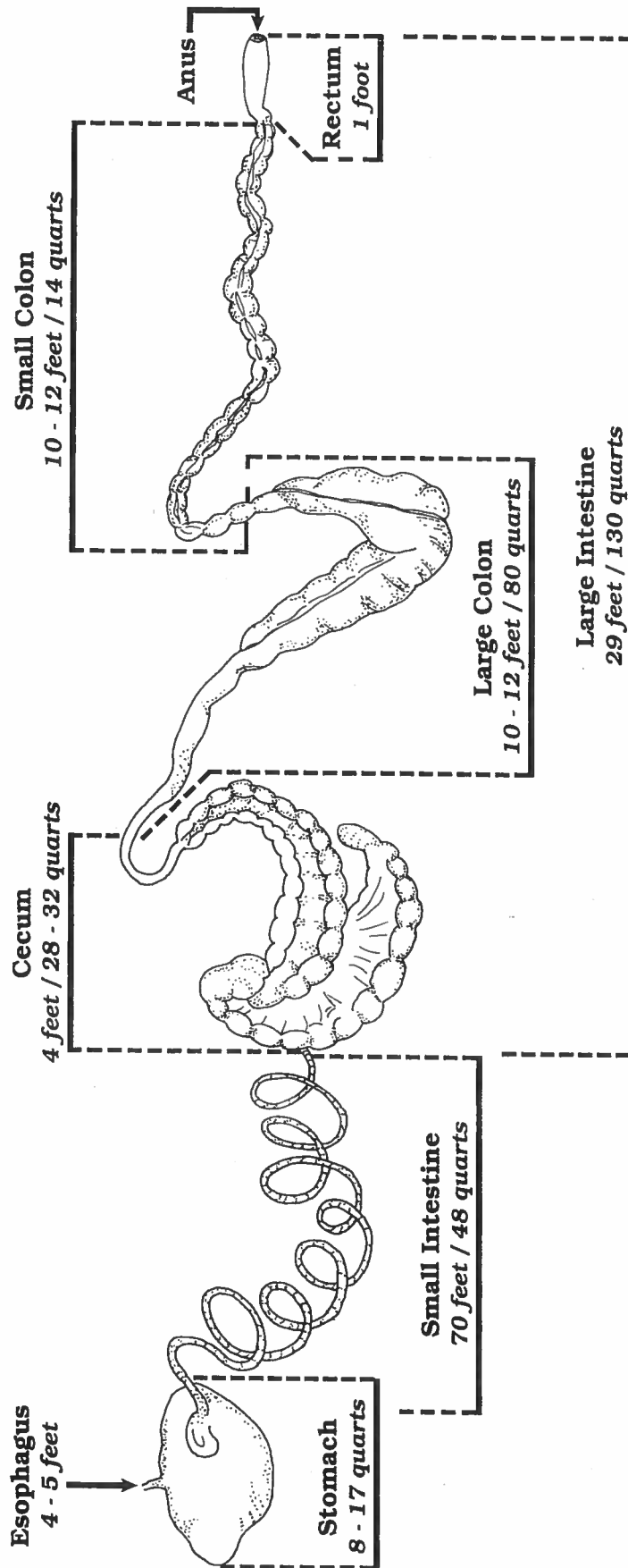
**Exploratory Learning: Educational Program**

This component relates to information found in Unit 5, Level 1 of Equine Awareness Youth Education Program: Educators' Curriculum Guide. (Green, Schmidt, and Whiteaker, 1997).

Product distribution through Curriculum Materials Service

Use this chart in conjunction with Anatomy - Label the digestive tract of the horse situation/task statement and/or Digestive Tract Identification tags.

# Digestive Tract



Exploratory Learning: Educational Program

Product distribution through Curriculum Materials Service

# EQUINE 4- STATION PROJECT JUDGING SCORING SHEET

Name \_\_\_\_\_ 4-H Age \_\_\_\_\_

Club \_\_\_\_\_ Division (circle): Beginner Intermediate Advanced  
 (Year 1 & 2) (3,4 & 5) (6 +)

Project Book Name \_\_\_\_\_ Project Book Number \_\_\_\_\_

Station 1 & 2 will be completed during Animal Project Judging at designated date\*

STATION 1	POSSIBLE SCORE	ACTUAL SCORE <u>    </u> /20
Feed (5 x 1 pt), Health (4 x 1 pt) and Breeds (4 x 1pt)	13 points	
Beg/Int: Medication Label Advanced: Digestive Tract	7 points	

STATION 2	POSSIBLE SCORE	ACTUAL SCORE <u>    </u> /35
Project Book, Record Book & Questions *books must be signed & dated by advisor	10/5/5 points (20 points)	
County Horse Rules	10 <sup>total</sup> points	
State Horse Rules [Uniform Rules for 4-H Horse Shows]	5 points	

Station 3 & 4 will be completed Monday of Fair at designated times\*

STATION 3	POSSIBLE SCORE	ACTUAL SCORE <u>    </u> /20
Parts of Horse (5 x 2 pts each)	10 points	
Parts of Hoof (5 x 2 pts each)	10 points	

STATION 4	POSSIBLE SCORE	ACTUAL SCORE <u>    </u> /25
Tack & Equipment Identification (5 x 2 pts each)	10	
Handling/Inspection Grooming/Cleanliness (Tack & Horse)	10 5	

Total Possible Score	Total Actual Score
100 points	

MEMBER GRADE: \_\_\_\_\_ **Blue (Excellent)**      \_\_\_\_\_ **Red (Good)**      \_\_\_\_\_ **White (Fair)**  
 100-85 points                      84-60 points                      59-below points

***Please return score sheet to check-in table to receive grade ribbon.***



### **Notes for 2022:**

1. Divisions were changed from age based to years in equine project (2020). We now have beginner, intermediate and advanced.
2. Equipment Cards were pre-selected by equine advisors who assisted with planning per division.
3. Project and record books will be signed and dated by advisor each year to prevent duplication.
4. Breeds-
  - a. Beginner- member is allowed to pick four breeds that they know.
  - b. Intermediate- flip four and guess on breed.
  - c. Advanced- increase vocabulary. Stock type, light horse, color breed, draft, pony or gaited breed. Judge will pick four to ask. Member has to point and name.
5. We are trying to get real labels to use. For example: "Please point to the name of this drug", "Is there an active ingredient in this drug", etc.
6. Health questions will be created by the 4-H educator.
7. Tack questions will be asked per discipline.
8. Grooming & Cleanliness: horses should be washed/brushed; clean and free from dirt, etc.
9. Parts of Horse/Hoof: will be completed on the member's project horse. If weather is inclement, poster will work.
10. Handling: Walk, trot, turn around and set up with inspection (showmanship).